

KLT-B8K-S5K3H7 V2.0
Samsung S5K3H7 MIPI Interfaccia Messa a fuoco automatica 8MP
Modulo telecamera



Modulo telecamera n.	KLT-B8K-S5K3H7 V2.0
Sensore d'immagine	S5K3H7
EFL	3.69 mm
F.NO	2.2
Pixel	3264 x 2448
Vista ad angolo	74.9°
Tipo di lente	1/3.2 pollice
Dimensioni dell'obiettivo	8.5 x 8.5 x 5.65 mm
Dimensione del modulo	16.35 x 8.5 mm
Tipo di modulo	Messa a fuoco automatica
Interfaccia	MIPI

Connettore di accoppiamento Codice. AXK7L30223G



Connettore di accoppiamento sulla scheda principale. Venduto separatamente.

A photograph of three young children climbing a rope net on a playground. The child in the center is wearing a light blue polo shirt and has a wide, joyful expression with their mouth open. To their right, another child in a striped shirt is also smiling. The background is a blurred wooden deck, suggesting motion. A large, semi-transparent watermark 'CameraModuleFactory.com' is overlaid diagonally across the image.

Top-class sensor for
premium mobile application!

Samsung S5K3H7

High speed and low power 8Mpixel sensor

8Mp 1/3.2" 1.4um BSI Pixel Image Sensor provides;

- Video features of 30fps at full 8Mp for zero shutter lag
- Low power camera solution with optimal design
- Outstanding BSI pixel providing clear and sharp still images in low light, YSNR10 82 Lux

SAMSUNG

Samsung S5K3H7

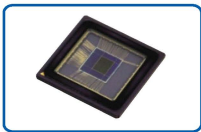
8Megapixel 1/3.2" 1.4um BSI CMOS Image Sensor

Key Features & Benefits



Target Applications

- Feature phones, Smart phones, Tablet and Digital Still Camera



Key Features

- Low power solution at full 8Mp
- Improved BSI pixel for clear and sharp still image
- On-chip Bad Pixel Correction (BPC)

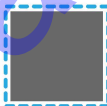
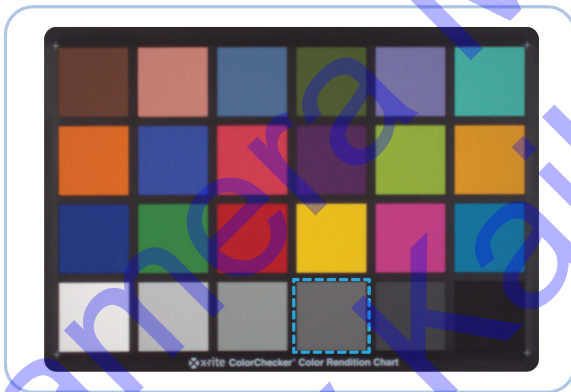


High Speed Frame Rate

- Full 8Mp 30fps enabling crisp still photos
- Video recording: full HD 30fps, HD 120fps, QVGA 240fps

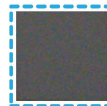
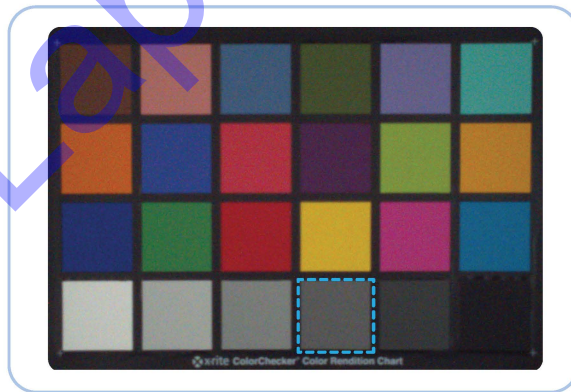
Product Images

700 Lux



Analog gain x1.6, 30fps
Shutter speed 55.5ms
SNR:38.7dB

50 Lux



Analog Gain x16, 30fps
Shutter Speed 33ms
SNR:25.69dB

Availability

S5K3H7 is sampling now with volume production for Q1, 2012.

Samsung Electronics Semiconductor Business

San#24 Nongseo-Dong, Kiheung-Gu, Youngin-City, Kyunggi-Do, Korea

For more information, please visit www.samsungsemi.com

The appearance of all products, dates, figures, diagrams and tables are subject to change at anytime without notice

SAMSUNG